

THE NEED

7.8 TO 1 ODDS OF INCARCERATION

in prison or jail rather than in a hospital for essential mental healthcare



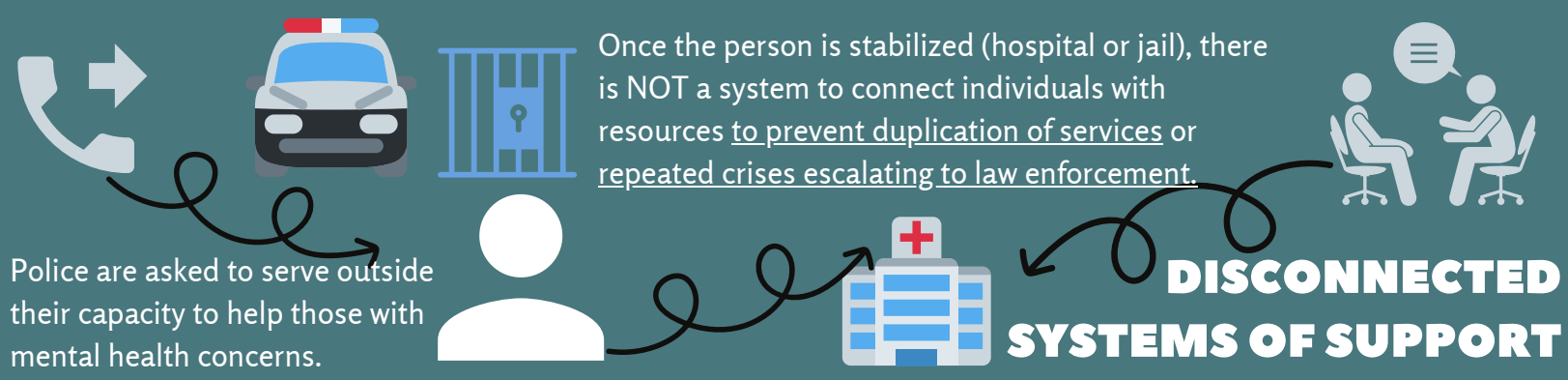
TEXAS RANKS #48 OF 50 IN THE US in funding mental health services indicating limited resources, instead relying on law enforcement intervention

2,406 senior law enforcement officials have indicated that the severely mentally ill population has become a major consumer of law enforcement resources

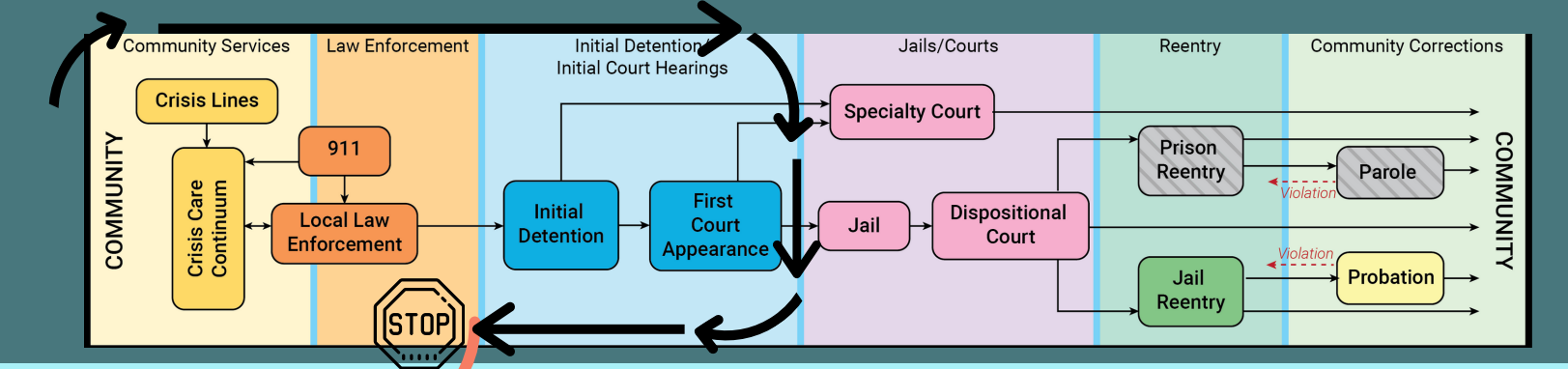
\$193.2 B yearly in lost earnings across the U.S. due to mental illness

1 OF 8 ER visits (adults) in the U.S. (approx 12 million) involve mental illness & substance use

WHAT EXISTS NOW?



THE SOLUTION



GAPP

The Greater Access & Partnership Program (GAPP) is an evidence-based model focused on stopping the cycle of repeated escalation through wraparound support.

GAPP services can be utilized by individuals at all points within the Sequential Intercept Model to provide the wraparound support needed to limit repeat offenses or entry to corrections.

GAPP stabilizes citizens by providing resources that meet both basic physiological and mental health needs.



HOW IT WORKS

WRAPAROUND APPROACH

Wraparound is intended to be a way of supporting individuals with a range of complex needs in any community.

This approach keeps individuals in their communities, producing better outcomes at lower cost.



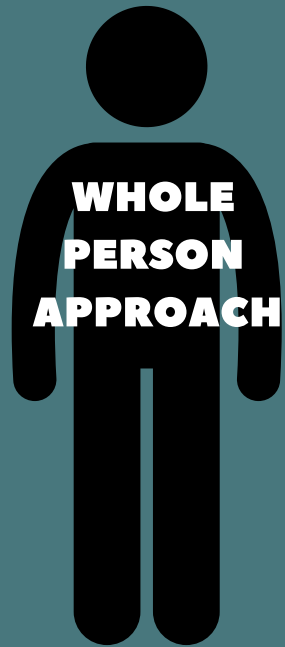
SCHOOLS
NON-PROFITS
FOR PROFITS
PLACES OF WORSHIP
LAW ENFORCEMENT
COMMUNITIES
HEALTH SYSTEMS

WHAT ARE THE OUTCOMES?

- Improvements in community mental health
- More effective use of law enforcement resources
- Decreased involuntary admissions to mental health ER's
- Expanded capacity of mental health providers
- Training for law enforcement



LINKING TO EXISTING RESOURCES



Behavioral Resources (for child or adult acting out)

Benefits Application Assistance (JPS, MHMR, Medicaid, Disability, etc)

Counseling Services

Food Resources

Family Safety / Conflict Concerns

General Financial Needs

Hoarding

Housing Repairs or Modifications

Housing (at risk of eviction or homelessness)

Legal Support

Medical Resources (need provider, supplies, medication assistance)

Substance Abuse Concerns

Transportation

Utility Assistance

Veterans Resources (Tricare, VA Hospital, Other Assistance)



WHAT IT TAKES

FUNDING

GAPP seeks funding from all sources - Grants, Foundations, Donors, Corporate Sponsorships, or Government Funds.

VOLUNTEERS

To be as cost-effective as possible, volunteers are needed to search all possible community resources, seek additional funding, and strengthen partnerships.

MEMORANDUMS OF UNDERSTANDING

MOUs between the GAPP, Police Departments, and other key community agencies are key to a holistic care approach through collaboration.

PROGRESSIVE LAUNCH & EXPANSION

As funding is secured, begin tiered launch, progressively adding additional districts, and verifying reporting measures and data to monitor ongoing outcomes.

